

ASSEMBLY INSTRUCTIONS

Universal clamp for
care options
Comfort Lift



Bedding Group

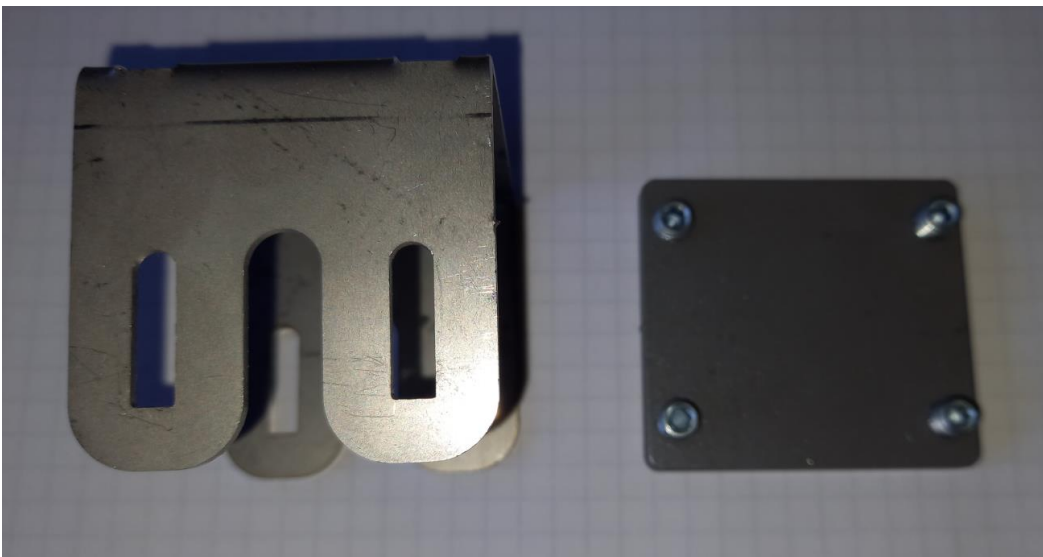
This manual describes the installation of a universal clamp on a Comfort Lift.

With this clamp, the different care options can be attached to a Comfort Lift.

Adjust the lift and the adjustable box spring sections of the Comfort Lift to maximum height so that the metal top frame is freely accessible.



Remove the square metal plate from the stainless-steel mounting bracket.



Determine where to mount the care option.

Slide the stainless-steel mounting bracket from the inside over the upper part of the longitudinal beam of the metal frame.



There are two side plates (hook anchors) on the “holding arm” of the care option to be mounted for attachment to the universal clamp.

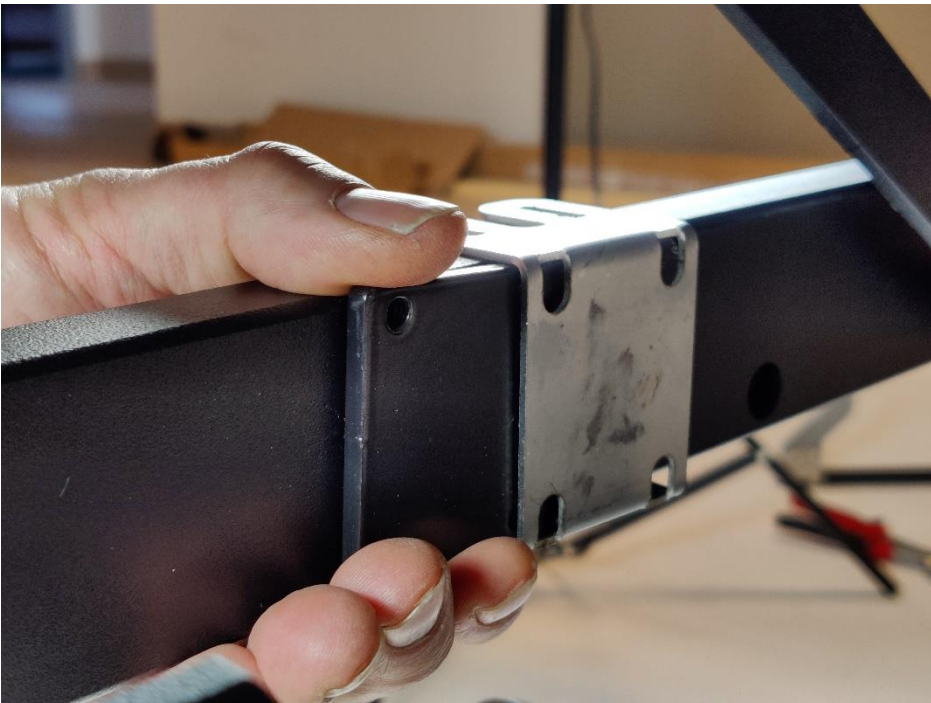
Loosen these side plates using the two bolts and nuts and hook them (using one of the bolts) into the slots of the stainless-steel mounting bracket.

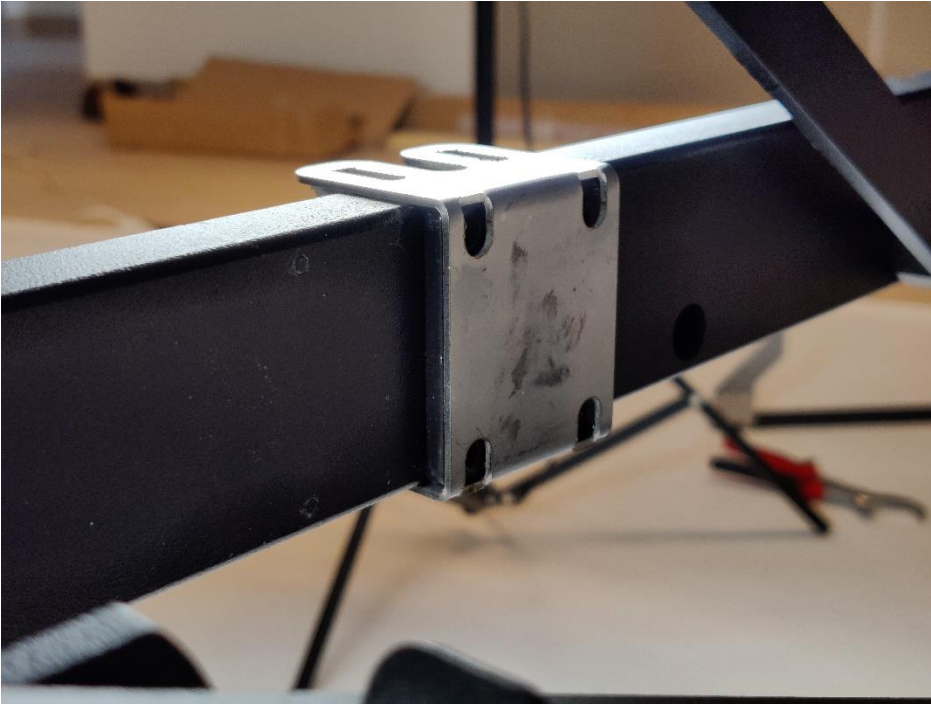


Press the stainless-steel mounting bracket closed so that the side plates hook into the slots of the mounting bracket.

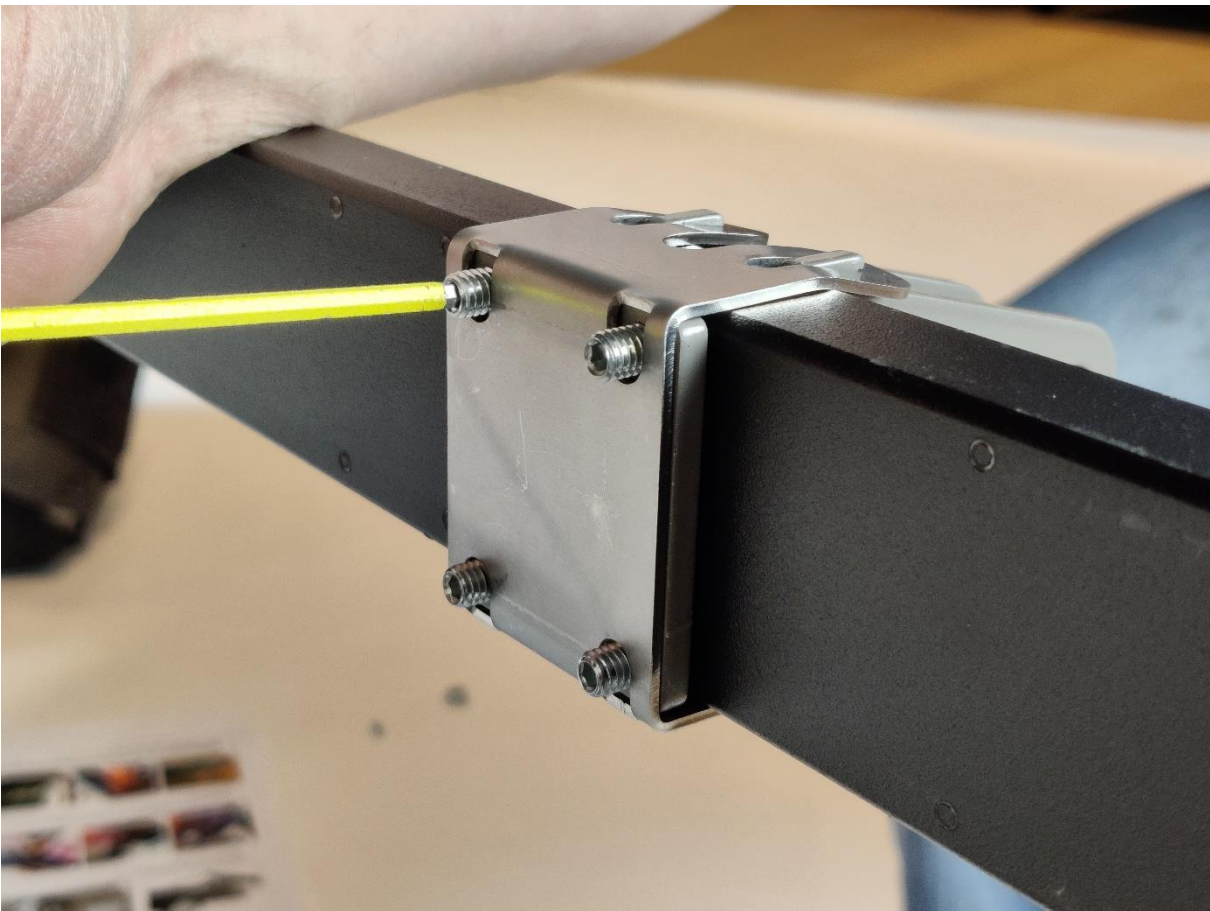


Remove the four Allen screws from the square metal plate. Press the two side plates (hook anchors) against the frame so that there is space between the frame and the clamp on the other side. Slide the square metal plate in between until it is nicely centred in the clamp.





Tighten the screws to secure the clamp to the frame.



Place the holder arm between the two side plates and secure it using the two bolts and nuts.



The various care options can now be placed on the holder arm.