

Radio remote control VFF/CDL-CF-15

with Bluetooth-Technology

Operating Instructions



 **Bluetooth**[®]
SMART



Foreword

Revision history

Version	Date
1.0	18.03.2020

Change
First edition

In your own interest

Read these operation instructions and keep them in a safe place. Observe the safety instructions.

Table of contents

Foreword	2
Revision history	2
In your own interest	2
Table of contents	3
1 General.....	5
1.1 How to use these instructions.....	5
1.2 Information about these operating instructions.....	5
2 Safety instructions.....	5-8
2.1 Intended use	6
2.2 Improper use	6
2.3 Specific safety instructions	6
2.4 Information about radio operation	7
2.5 Handling Batteries	8
2.6 Electronic medical equipment.....	8
3 Commissioning / Operation	9-14
3.1 The remote control	9
3.2 The double drive	10
3.3 The single drives.....	10
3.4 Inserting the batteries	11
3.5 Teach-in process.....	11
3.6 Initial position	12
3.7 Bed adjustment.....	12
3.8 Memory positions	12
3.9 Torch function	13
3.10 Reset to factory settings	14
4 Malfunctions / troubleshooting.....	15
5 Technical data.....	15
6 Maintenance and cleaning.....	15
7 Disposal.....	16

1 General

1.1 How to use these instructions Symbols used



Warning

Indicates about a dangerous situation; potential consequences: death or serious injury.



Caution

Potentially dangerous situation; potential consequences: slight or minor injuries.



General information; Information that is important for the function or operation, or that will facilitate operation or assembly.

1.2 Information about these operating instructions

These operating instructions serve the successful and safe use of the radio remote control.

The operating instructions will help you to avoid dangers, and minimise repairs and failures.

These operating instructions were compiled with great care. No liability will be assumed for the accuracy and completeness of the data, images or drawings, unless prescribed by law.



Subject to technical amendments that serve continuous product improvement without prior announcement!

2 Safety instructions

The radio remote control can be used by children aged 8 and upwards and by persons with limited physical, sensory or mental aptitude or lack of experience and/or knowledge if they are supervised or have received instruction from a person responsible for their safety as to how the radio remote control is used and the associated risks.

Children may not play with the radio remote control.

Children may not clean or service the device without supervision.

2.1 Intended usage

The radio remote control is designed for:

- operating control units.
- use within the home



Caution

The radio remote control is only designed for the designated purpose. Any other use is deemed improper and can lead to accidents or the destruction of the device.

This will lead to immediate invalidation of the warranty and any warranty claims by the end user with respect to the manufacturer.

2.2 Improper usage

Please observe the following information about improper usage.



Warning

The radio remote control and the control unit may not be used

- with a medical product or installed in a medical product,
- in an environment in which there are inflammable or explosive gases or vapours (e.g. anaesthetics),
- in damp environments,
- outdoors,
- in applications that are washed in mechanical washing systems,
- for lifting and lowering of loads, in craftsman or industrial areas or in the household.

2.3 Specific safety instructions



Caution

The following safety instructions serve to protect you, third parties and the equipment, and must therefore be adhered to strictly.

Operating environment

- The radio remote control may not come into direct contact with damp or water. The radio remote control is only suitable for dry indoor rooms.
- When switching from cold to warm environments, allow the radio remote control time to adjust to the

ambient temperature for a few hours before use, otherwise it may suffer damage as a result of condensation.

- Never use the remote control close to devices that emit strong electromagnetic fields. This could impact on its function.
- Also avoid environments exposed to direct sunlight, high temperatures, cold, damp or wet.

The device

- Check first whether the housing is damaged. If this is the case, do not use the remote control but contact the supplier for a replacement.
- For safety reasons, it is prohibited to make any unauthorised changes to the remote control. Do not open the housing of the remote control, except to change the batteries, otherwise the warranty will become void.

Operation

- The remote control only functions correctly if it is commissioned and used properly.
- To avoid injury, never allow children or other vulnerable persons to use the remote control unsupervised.
- Radio signals can pass through walls and ceilings!. Only use the remote control in the room in which the adjustable bed is located!

2.4 Information about radio operation

Please note that the transmission range depends on the local conditions. It may impact on other devices operated by radio, for instance WLANs, cordless phones or microwave ovens.

Transmission / receiving frequency:
2.4GHz ISM band.

Devices according to the standard of the Bluetooth SIG transmit as Short Range Devices (SRD) in a license-free ISM band (Industrial, Scientific and Medical band) between 2.402 GHz and 2.480 GHz.

2.5 Handling batteries



Caution

- Keep batteries out of reach of children.
- Batteries must not be thrown into fire, short circuited, taken apart, or charged. Danger of explosion!
- Batteries contain harmful acids. Replace weak batteries as soon as possible to avoid battery leakage.
- Never use old and new batteries together or mix batteries of different types.

Handling leaking batteries

- Chemically resistant protective gloves and goggles should be worn when replacing leaking batteries!
- Avoid touching leaking batteries with your bare hands as far as possible.
- Should you come into contact with leaked battery components, wash your hands thoroughly.
- Remove any electrolyte residues by damp wiping. Wash any clothes that come into contact with the electrolyte.

2.6 Electronic medical devices

This product is designed and manufactured according to the Standard DIN EN 60335-1 (Safety of Household and similar Electrical Appliances) and carries the CE mark. If you use a Medical Device such as pacemaker you may wish to contact your specialist to answer any questions.

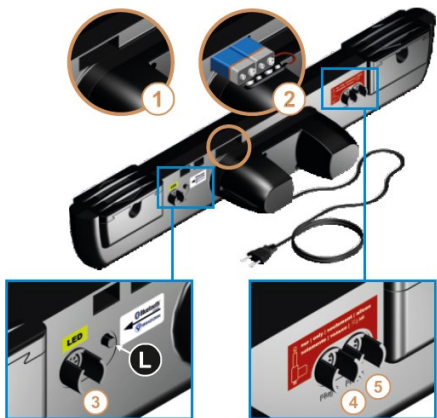
3 Comissioning / Operation

3.1 The remote control



- S** Status LED
- 1** Head drive up
- 2** Head drive down
- 3** Back drive up
- 4** Back drive down
- 5** Leg drive up
- 6** Leg drive down
- 7** Foot drive up
- 8** Foot drive down
- 9** All drives up
- 10** All drives down
- 11** Memory position 1
- 12** Memory position 2
- 13** Save memory position
- 14** Zero-Gravity position
- 15** Torch LED on/off
- T** Torch LED
- B** Battery compartment

3.2 The double drive



① w/o batteries

③ LED module ¹⁾

④ Drive 3

② with 2 batteries

● L Teach-in Button

⑤ Drive 4

3.3 The single drives

Connect the foot adjustment drive to socket **4** and the head adjustment drive to socket **5**.



¹⁾ Optional; not to be operated with this remote control

3.4 Inserting the batteries

Insert the supplied batteries (2x 1,5V AAA LR03) into the battery compartment as shown in the picture. Ensure that the batteries are inserted in the right direction (+/-)!



Once the batteries have been inserted, close the battery compartment lid again and the radio remote control is operational.

3.5 Teach-in process



This teach-in process is normally carried out by the manufacturer and you can skip this step.

If the status LED **S** and the keypad illumination are flashing, the remote control has not yet been taught in on the dual drive.

In the following it is assumed that this is the case. It will be described how the teach-in process has to be carried out.

- Briefly press any button on the remote control
 - ▶ The status LED **S** and the keypad illumination flash alternately.
- Press button L on the double drive for approx. 1 s.
 - ▶ The back adjustment motor moves briefly up/down.
- The status LED **S** goes off, the keypad illumination lights up constantly. The teach-in process has been completed successfully.



If the status LED **S and the keypad illumination do not flash, but a connection between double drive and remote control is still not established (bed cannot be adjusted), the double drive and remote control must be reset to the factory settings and re-taught. Resetting to factory settings is explained on page 11 of this manual.**

3.6 Initial position

Before you adjust the bed for the first time, you should move the adjustment drives to their starting position.

- Press button **10** and keep it pressed.
- The adjustment drives move to their initial position and switch off then.

3.7 Bed adjustment



Caution

Before making any adjustments: Check that neither you nor anyone else or any pets are at risk from the moving parts of the adjustment mechanics!

Use buttons 1 to 10 for the bed adjustment. As long as you keep the buttons pressed, the drives will move.

3.8 Memory positions

Saving memory positions

Adjust the bed until you have reached a comfortable position. Then proceed as follows:

- Press button **13** 3 times followed by one of the memory buttons **11** or **12**.

- The current position is assigned to the corresponding memory button and saved.

Recalling memory positions



Caution

Before using the memory buttons: Check that neither you nor anyone else or any pets are at risk from the moving parts of the adjustment mechanics!

Stored positions can be recalled with the memory buttons.

Proceed as follows:

- Press one of the buttons **11** or **12** and keep it pressed.
- The adjustment drives will move to the saved positions and switch off then.

Zero-Gravity position

- Press button **14** and keep it pressed.
- The adjustment drives will move to the zero-gravity position and switch off then.



The zero-gravity position is a memory position that can't be changed!

3.9 Torch function



Caution

Do not look directly into the torch LED!

- Press button **15** for approx. 3 seconds. The torch LED **T** will switch on and goes off automatically after approx. 20 seconds.
- Press button **15** again shortly will switch of the torch LED.
- If you keep the button pressed, the LED remains switched on. It then goes off about 20 seconds after releasing the button.

3.10 Reset to factory settings

Resetting the remote control:

- Simultaneously press and hold the buttons **1**, **3** and **5** or **2**, **4** and **6**.
- The status LED starts flashing.
- When the status LED is steady, release the buttons.
- The status LED goes off, the remote control is reset.

Resetting the double drive:

- Press button **L** on the double drive for approx. 10s.
- The drive for the leg adjustment moves briefly to confirm a reset to the factory settings.
- Remove the plug from the mains socket and wait for at least 2 minutes.
- Then reconnect the mains plug.
- The double drive is now returned to its default settings.



PLEASE NOTE:

After resetting the double drive to the factory settings, the pairings of remote controls are removed, the pairing process has to be carried out again.

4 Malfunctions / troubleshooting

Before contacting the service office of the furniture manufacturing company, please try the following in the event of a malfunction:

- Check to ensure that the dual drive VMAT-Basic is connected to the mains supply (power socket).
- Check (e.g. with a lamp) that the power socket actually works (fuse).
- Replace the batteries of the radio remote control (see page 11).
- Carry out the teach-in process again (see page 11).
- Reset the dual drive to the default settings (see page 14) and then carry out the teach-in process again (see page 11).

5 Technical data

Operating voltage.....3VDC
via batteries

Power consumption

Idletyp. 1 μ A

Operational.....2mA

Transmission freq. 2,4GHz (ISM-Band)

Transmission range 10 - 50m

Housing material ABS

Protection gradeP20

Battery type..... 2 pcs. 1,5V AAA (LR03)

Weight (incl. batteries and packaging) approx. 80g

6 Maintenance and cleaning

The radio remote control is maintenance-free, apart from the replacement of the batteries.

Clean the housing with a slightly damp cloth. Do not use any aggressive detergents or scouring agents.

7 Disposal

The remote control and the double drive contain electronic components, cables, metals, plastics etc. and must be disposed of in accordance with the applicable environmental regulations of the respective country.



This symbol on the product or its packaging indicates that the product may not be disposed of via the household waste system.

Users have a duty to dispose of the old equipment via the collection point for electronic and electrical scrap. Separate collection and correct disposal of your old equipment helps conserve natural resources and guarantees recycling, which protects human health and preserves the environment.

Please contact your local council or waste disposal authority to find out where the collection points are for your old equipment.

Disposal of the radio remote control in Germany is subject to the Electrical Equipment Act, internationally to the EU Directive 2011/65/EU RoHS or the respective national laws.

(The product is not subject to the EU Directive 2002/96/EC (WEEE) and its supplement EU Directive 2003/108/EC.)

Disposal of batteries in the EU is subject to the Battery Directive 2006/66/EU, in Germany to the Battery Act (BattG) dated 25.6.2009, and internationally to the respective national laws.

Document is subject to change without prior announcement.

All rights reserved.

It is strictly forbidden to duplicate this document in any form without the prior consent of the company LS Bedding nv.

LS Bedding nv is not liable for any errors in this document or for any ensuing damages connected to the delivery, performance or use of this material.